

... change  
is in the air

COMMERCIAL SYSTEMS  
SDV AIR CONDITIONERS  
HIGH PRESSURE STATIC  
DUCT SERIES  
MINI CHILLERS  
MODULAR CHILLERS  
FAN COIL UNITS  
2024



**SINCLAIR**  
AIR CONDITIONING

**THE SOLUTION FOR ANY OF YOUR COOLING OR HEATING REQUIREMENTS**

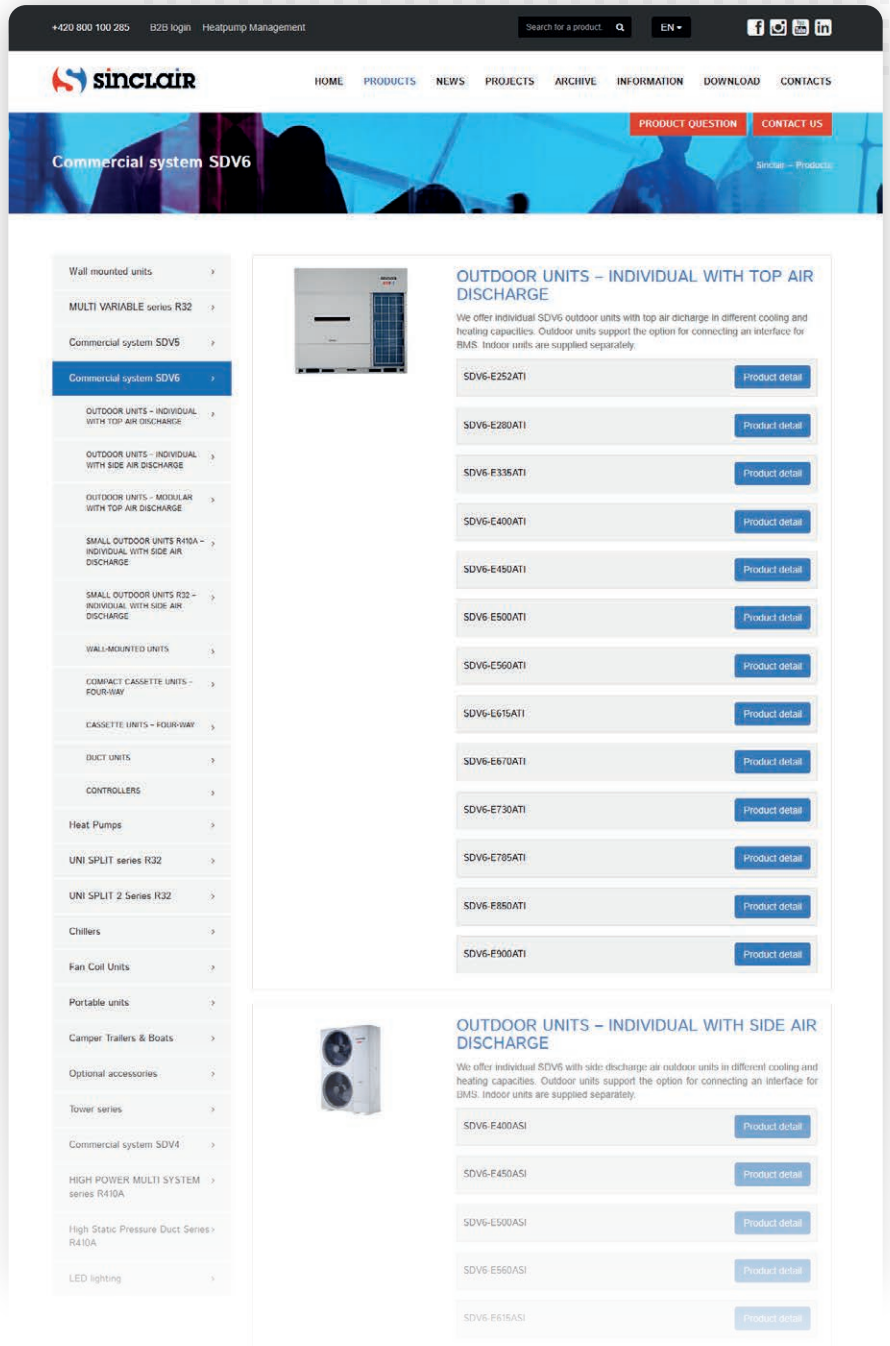
Decide whether it will be a system in which the medium is gas or water. Family house, hospital, office, school, shop, hotel, sports hall, bank, manufacturing plant or anything else, just write to us and we will choose the best solution for you.

Using the design program Selection software, we will generate suitable outdoor units, indoor units, refnets and the exact amount of refrigerant that will need to be added to the system. Tell us the desired temperature in the room, we will take care of it. You will receive the result from us in several formats. Open your project anytime, anywhere.

**ASSORTMENT - FROM SMALL SYSTEMS TO LARGE-SCAPE SOLUTIONS**

Our mini SDV device starts at capacity 7,2 kW, the mini chiller at 5 kW. With the set of three SDV6 outdoor units, you get an output of 270 kW. By connecting 16 chiller moduls, you get a perfect output of 2 240 kW. 64 - is the maximum number of indoor units that can be connected in one SDV6 refrigeration system.

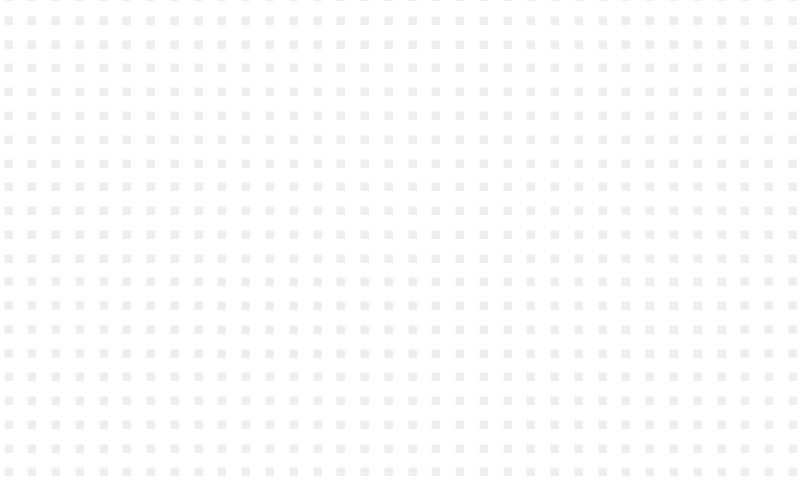
High efficiency, savings, reliability, efficiency, easy installation = technology that will pleasantly surprise you.



[www.sinclair-solutions.com](http://www.sinclair-solutions.com)

*Our website is dedicated to everyone who wants to learn more about Sinclair air conditioners and other products. Additionally after log-in to partner section there is all technical documentation available for download.*

# QUALITY STRENGTHENS PARTNERSHIPS



## ABOUT SINCLAIR BRAND

Sinclair brand has long tradition and we believe in bright future too. Sinclair air conditioners are getting more and more popularity and trust on the market every year. Our strong team of professionals ensures perfect cooperation with partners from many countries around the world. Development of our partnership never ends.

SINCLAIR Global Group is based on essential principals of long-term partnership and high-quality products. We regularly organize technical training in our academy to be sure that all our partners have updated information about news in our assortment and proper technical background.

SINCLAIR products will secure comfortable temperature in your home or office in all climatic conditions through the whole year. We are more than happy to introduce you SINCLAIR air conditioners.

## OUR VISION AND MISSION

Environment protection becomes more and more crucial for humanity and its future generations. SINCLAIR Global Group perceives it the same way hence we focus on developing and applying new technologies which helps to reduce energy consumption and global warming effect.

Our products fulfil strict EU norms and in many cases even surpass them. The new outdoor units of the SDV6 series use environmentally friendly R32 refrigerant.

SINCLAIR believes in long-term, stable and healthy progression supported by hard work and strong code of ethics. Long-term success of any brand depends on satisfied customers. Our customers are satisfied thanks to high-quality, reliable a technically advanced products with reasonable pricing and timeless design.



## SUMMARY

SDV6 - THE FUTURE OF COMMERCIAL SYSTEMS	4
OUTDOOR UNITS SDV6 AND SDV5 SIDE AIR DISCHARGE	8
OUTDOOR UNITS SDV6 TOP AIR DISCHARGE	16
OUTDOOR UNITS SDV5-3P HEAT RECOVERY TOP AIR DISCHARGE	18
HYDROBOX FOR SDV5-3P HEAT RECOVERY SYSTEM	20
DISTRIBUTION BOXES FOR SDV5-3P HEAT RECOVERY SYSTEM	21
SDV6 INDOOR UNITS	22
AHU CONTROL BOX	28
OUTDOOR AND INDOOR UNITS - HIGH STATIC PRESSURE DUCT	30
ACCESSORIES SDV6 AND SDV5 - CONTROLLERS, EXTENDED MODULES, BMS GATEWAYS	32
A2W SYSTEMS - SCV MINI CHILLERS R32, SCV MODULAR CHILLERS R32, , FAN COIL UNITS	34
OUTDOOR UNITS - SCV MINI CHILLERS R32	36
OUTDOOR UNITS - SCV MODULAR CHILLERS R32	38
FAN COIL INDOOR UNITS	40
NOTES AND EXPLANATIONS	49



The year 2023 was exceptional and climate records fell like dominoes. It was not only the warmest year on record, but also the first year with all days more than 1 °C warmer than the pre-industrial period. Temperatures in 2023 exceeded those of any period in at least the last 100 000 years. Indoor air conditioning is no longer a luxury but a necessity these days.

The environment and our lives are changing, and this is a challenge for all of us. Our only option is to evolve and break the boundaries. Let us explore new paths to success together.

Reliability. Environmental friendliness. Intelligence. Efficiency. All is perfectly integrated into one product.



Introducing the new revolutionary SINCLAIR SDV6 series of commercial systems.

We think about the climate in which our children and future generations will grow up. That is why we are starting to use the more **environmentally friendly R32 refrigerant in our commercial systems.**


Our new series of individual side-discharge units will surely impress you with a **wide range of capacities from 7 kW up to 61,5 kW.** When using outdoor units from this series, their compact design will save you 30 % of the space for installation. This is also why the SDV6 outdoor units perfectly solve the problem of lack of space and allow for much more flexible installations.

The **SDV6 individual side-exhaust units with capacities from 40 kW to 61,5 kW** may be optionally equipped for external static pressure up to 80 pascals. This allows the air to be discharged via very long ducting, which prevents the heat island effect and thus ensures efficient heat dissipation from the outdoor units.

Individual upward-discharge **SDV6 units are available with capacities from 25,2 kW to 90 kW.** If you need even greater capacities, there are modular units to achieve a **maximum capacity of up to 270 kW in one modular system.**

The SDV6 series not only saves space but mainly the costs of heating and cooling the buildings. Overcome the old boundaries set by previous generations of commercial systems and step into a new future with us.





SDV6 – the new  
generation of  
commercial systems

ECOLOGICAL  
REFRIGERANT  R32

## 6 REASONS TO CHOOSE THE SDV6 SERIES

- Resistance to weather extremes
- Harmony between building, user, and equipment
- Beauty of spatial design
- Simplification of the installation process
- Intelligent operation and maintenance of equipment
- Reliability and comfort

### HYPERLINK

- 1** The original communication bus chip greatly **simplifies installation and reduces installation costs**

HyperLink communication technology supports any type of connection, not just linear topology, which reduces installation costs and the possibility of misconnection. It has stronger resistance to interference and reaches a communication distance of up to 2000 m. In addition to the common linear bus connection, the communication line supports tree topology, star topology, ring topology etc.

### SHIELDBOX

- 2** The fully enclosed IP55 electrical control box provides all-round protection for internal electronic components, greatly **improving system reliability**. Electronic **components in the fully enclosed box are isolated from the external environment** to protect them from corrosion, sand, moisture, snowstorms, and other environmental influences.

All electronic components including the inverter module, filter module and power module are cooled by a specially designed microchannel refrigerant circuit to ensure that the electronic components operate at the best temperature.

The unique **PTC heater with precise sensor temperature control** ensures that the temperature inside the chamber is within the normal operating temperature range of the electronic equipment, even in extreme outdoor temperatures down to  $-30\text{ }^{\circ}\text{C}$ .

The 5 high-precision temperature sensors are used to accurately monitor the operating states of the electronic equipment under various conditions to ensure that the **internal temperature of the chamber is always controlled** at  $40\text{--}50\text{ }^{\circ}\text{C}$ .

The Shieldbox function is supported by the SDV6-ExxxATI/ATM outdoor units with upward air discharge.

### MAXIMUM ENERGY SAVING

- 3** Each SDV6 device is equipped with a built-in professional operation and maintenance management algorithm. The annual **operating energy efficiency of each device was thus reduced by more than 28 %**.

The indoor unit automatically detects the size of the room and the effectiveness of its heat insulation. The system automatically matches the evaporating temperature (for cooling) or condensing temperature (for heating) to the room load to maximize comfort and energy efficiency.

### MAXIMUM COMFORT

- 4** The temperature setting by  $0.5\text{ }^{\circ}\text{C}$ , selection of 7 fan speeds, sleep mode, quiet mode, high-efficiency filter, and various sterilization equipment and other **advanced technologies** used in SDV6 indoor units are designed **to create a quiet, comfortable, and healthy indoor environment**.

The 4-way cassette unit supports a static pressure of 50 Pa for long-range airflow and can be used in spaces up to 4.5 metres high.

*The cassette units allow each of their four louvres to be controlled independently.*

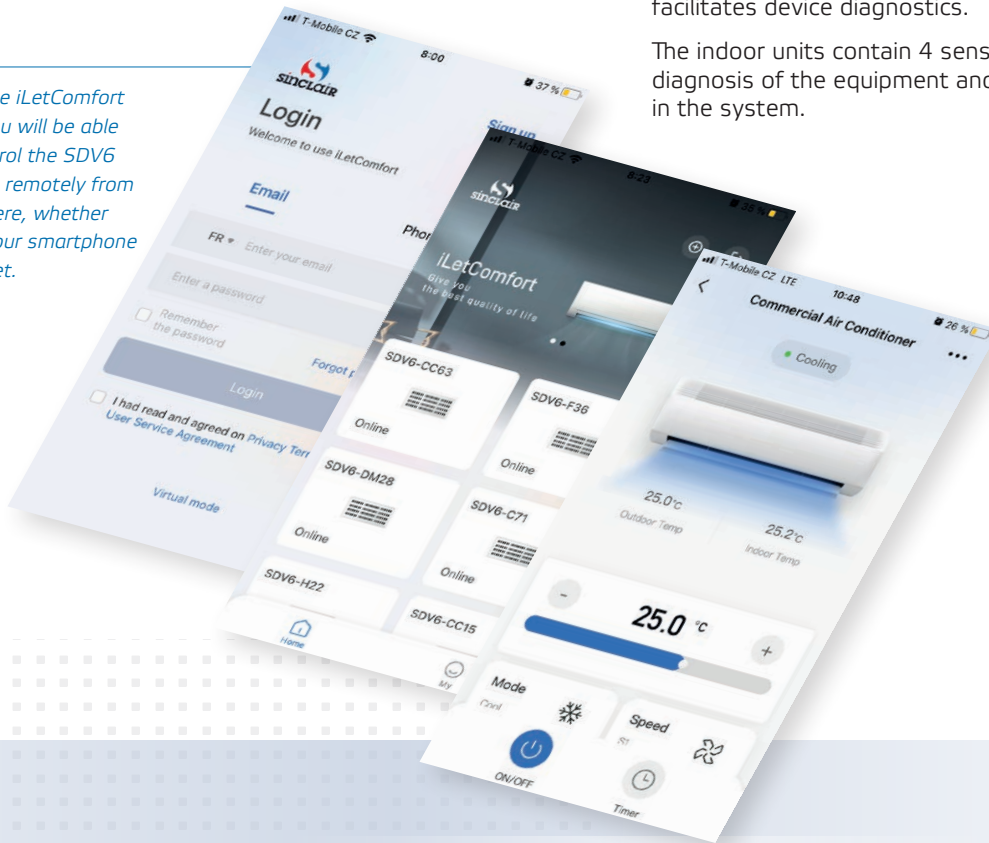


## MAXIMUM CONTROL

**5** The SDV6 series offers a wide **variation of solutions** for your buildings. **From homes and small shops to large shopping malls and complex buildings.** It provides the most suitable solution for centralized and customized management, optionally using MODBUS, BACNET or KNX protocols.

A part of the SWC-62 and SWC-63 wall-mounted controllers is an integrated Wi-Fi module.

With the iLetComfort app, you will be able to control the SDV6 system remotely from anywhere, whether from your smartphone or tablet.



## INTELLIGENT TOOL FOR START-UP, MAINTENANCE AND DIAGNOSTICS

**6** There are up to 19 sensors deployed in the cooling system. The current status of each part of the refrigerant piping is known throughout the process. This can **detect system status in real time, predict system failures in advance, and provide data analysis for system maintenance.**

The smart Bluetooth module simplifies maintenance and facilitates device diagnostics.

The indoor units contain 4 sensors. They enable accurate diagnosis of the equipment and the amount of refrigerant in the system.

6 REVOLUTIONARY INNOVATIONS OF THE SDV6 SERIES





# OUTDOOR UNITS SDV6



# OUTDOOR UNITS WITH SIDE AIR DISCHARGE

## SDV6 SMALL INDIVIDUAL SIDE AIR DISCHARGE R32

ECOLOGICAL REFRIGERANT R32

### FEATURES

- Ecological refrigerant R32
- Autoaddressing of indoor units
- Heat up to -20 °C outside temperature
- Space saving design
- Power input limitation 40-100 %
- ALARM, ON/OFF, DEFROST signal
- Optionally BMS gateways MODBUS, BACNET

SDV6-E80BS  
SDV6-E100BS  
SDV6-E120BS  
SDV6-E140BS  
SDV6-E160BS  
SDV6-E180BS  
SDV6-E120BS-3  
SDV6-E140BS-3  
SDV6-E160BS-3  
SDV6-E180BS-3



### TECHNICAL PARAMETERS

MODEL		SDV6-E80BS	SDV6-E100BS	SDV6-E120BS SDV6-E120BS-3	SDV6-E140BS SDV6-E140BS-3
Capacity cooling / heating max.	kW	7,2 / 9,0	9,0 / 10,8	12,3 / 14,0	14,0 / 16,0
Power supply	phase / Hz / V	1~ / 50 / 220-240	1~ / 50 / 220-240	1~ / 50 / 220-240 3~ / 50 / 380-415	1~ / 50 / 220-240 3~ / 50 / 380-415
SEER / SCOP	-	5,8 / 3,8	5,7 / 3,8	7,8 / 4,9	7,4 / 4,8
Max. number of indoor units	-	5	6	8	10
Sound pressure level at 1 m	dB(A)	53	53	53	56
Dimension (w × h × d) / Net weight	mm / kg	1038×864×409 / 77	1038×864×409 / 77	1038×864×409 / 94 1038×864×409 / 110	1038×864×409 / 94 1038×864×409 / 110
Operating temperature range - cooling / heating	°C	-15-52 / -20-16,5 WB	-15-52 / -20-16,5 WB	-15-52 / -20-16,5 WB	-15-52 / -20-16,5 WB

MODEL		SDV6-E160BS SDV6-E160BS-3	SDV6-E180BS SDV6-E180BS-3		
Capacity cooling / heating max.	kW	15,5 / 17,5	17,5 / 19,5		
Power supply	phase / Hz / V	1~ / 50 / 220-240 3~ / 50 / 380-415	1~ / 50 / 220-240 3~ / 50 / 380-415		
SEER / SCOP	-	7,4 / 4,8	7,1 / 4,8		
Max. number of indoor units	-	11	12		
Sound pressure level at 1 m	dB(A)	56	58		
Dimension (w × h × d) / Net weight	mm / kg	1038×864×409 / 94 1038×864×409 / 110	1038×864×409 / 94 1038×864×409 / 110		
Operating temperature range - cooling / heating	°C	-15-52 / -20-16,5 WB	-15-52 / -20-16,5 WB		

# OUTDOOR UNITS SDV6



# OUTDOOR UNITS WITH SIDE AIR DISCHARGE

## SDV6 SMALL INDIVIDUAL SIDE AIR DISCHARGE R410A

**R410A**  
REFRIGERANT

### FEATURES

- Autoaddressing of indoor units
- Combination of indoor units 50 - 160 %
- Heat up to -20 °C outside temperature
- Space saving design
- Power input limitation 40-100 %
- ALARM, ON/OFF, DEFROST signal
- Optionally BMS gateways MODBUS, BACNET

SDV6-E80AS  
SDV6-E100AS  
SDV6-E120AS  
SDV6-E140AS  
SDV6-E160AS  
SDV6-E120AS-3  
SDV6-E140AS-3  
SDV6-E160AS-3



### TECHNICAL PARAMETERS

MODEL		SDV6-E80AS	SDV6-E100AS	SDV6-E120AS SDV6-E120AS-3	SDV6-E140AS SDV6-E140AS-3
Capacity cooling / heating max.	kW	7,2 / 9,0	9,0 / 10,8	12,3 / 14,0	14,0 / 16,0
Power supply	phase / Hz / V	1~ / 50 / 220-240	1~ / 50 / 220-240	1~ / 50 / 220-240 3~ / 50 / 380-415	1~ / 50 / 220-240 3~ / 50 / 380-415
SEER / SCOP	-	5,4 / 3,8	5,4 / 3,8	7,2 / 4,9	7,0 / 4,8
Max. number of indoor units	-	5	6	8	10
Sound pressure level at 1 m	dB(A)	53	53	55	56
Dimension (w × h × d) / Net weight	mm / kg	1073×864×523 / 80	1073×864×523 / 80	1073×864×523 / 94 1073×864×523 / 109	1073×864×523 / 94 1073×864×523 / 109
Operating temperature range - cooling / heating	°C	-15-52 / -20-16,5 WB	-15-52 / -20-16,5 WB	-15-52 / -20-16,5 WB	-15-52 / -20-16,5 WB

MODEL		SDV6-E160AS SDV6-E160AS-3			
Capacity cooling / heating max.	kW	15,5 / 17,5			
Power supply	phase / Hz / V	1~ / 50 / 220-240 3~ / 50 / 380-415			
SEER / SCOP	-	6,8 / 4,8			
Max. number of indoor units	-	11			
Sound pressure level at 1 m	dB(A)	56			
Dimension (w × h × d) / Net weight	mm / kg	1073×864×523 / 94 1073×864×523 / 109			
Operating temperature range - cooling / heating	°C	-15-52 / -20-16,5 WB			

# OUTDOOR UNITS SDV5



# OUTDOOR UNITS WITH SIDE AIR DISCHARGE SDV5 INDIVIDUAL SIDE AIR DISCHARGE

**R410A**  
REFRIGERANT

## FEATURES

- Autoaddressing of indoor units
- Combination of indoor units 50 - 130 %
- Heat up to -20 °C outside temperature
- Space saving design
- Priority mode cool/heat based on outside temperature
- Optionally BMS gateways MODBUS, BACNET

SDV5-200EAS  
SDV5-224EAS  
SDV5-260EAS  
SDV5-280EAS  
SDV5-335EAS



## TECHNICAL PARAMETERS

MODEL		SDV5-200EAS	SDV5-224EAS	SDV5-260EAS	SDV5-280EAS
Capacity cooling / heating max.	kW	20,0 / 22,5	22,4 / 25,0	26,0 / 28,5	28,0 / 31,5
Power supply	phase / Hz / V	3~ / 50 / 380-415	3~ / 50 / 380-415	3~ / 50 / 380-415	3~ / 50 / 380-415
SEER / SCOP	-	7,2 / 4,0	6,9 / 4,3	6,3 / 4,5	5,9 / 4,5
Max. number of indoor units	-	11	13	15	16
Sound pressure level at 1 m	dB(A)	58	58	58	60
Dimension (w × h × d) / Net weight	mm / kg	1120×1558×528 / 143	1120×1558×528 / 143	1120×1558×528 / 144	1120×1558×528 / 144
Operating temperature range - cooling / heating	°C	-5~48 / -20~24	-5~48 / -20~24	-5~48 / -20~24	-5~48 / -20~24

MODEL		SDV5-335EAS		
Capacity cooling / heating max.	kW	33,5 / 37,5		
Power supply	phase / Hz / V	3~ / 50 / 380-415		
SEER / SCOP	-	6,4 / 4,1		
Max. number of indoor units	-	20		
Sound pressure level at 1 m	dB(A)	61		
Dimension (w × h × d) / Net weight	mm / kg	1120×1558×528 / 157		
Operating temperature range - cooling / heating	°C	-5~48 / -20~24		



# OUTDOOR UNITS SDV6



# OUTDOOR UNITS WITH SIDE AIR DISCHARGE SDV6 INDIVIDUAL SIDE AIR DISCHARGE

**R410A**  
REFRIGERANT

## FEATURES

- Autoaddressing of indoor units
- Combination of indoor units 50 - 130 %
- Heat up to -30 °C outside temperature
- Space saving design
- Power input limitation 40-100 %
- ALARM, ON/OFF, DEFROST signal
- Optionally BMS gateways MODBUS, BACNET

**NEW**

SDV6-E400ASI



SDV6-E450ASI  
SDV6-E500ASI  
SDV6-E560ASI  
SDV6-E615ASI

## TECHNICAL PARAMETERS

MODEL		SDV6-E400ASI	SDV6-E450ASI	SDV6-E500ASI	SDV6-E560ASI
Capacity cooling / heating max.	kW	40,0 / 45,0	45,0 / 50,0	50,0 / 56,5	56,0 / 63,0
Power supply	phase / Hz / V	3~ / 50 / 380-415	3~ / 50 / 380-415	3~ / 50 / 380-415	3~ / 50 / 380-415
SEER / SCOP	-	6,2 / 4,0	6,2 / 4,1	6,1 / 4,2	6,0 / 4,1
Max. number of indoor units	-	22	26	29	33
Sound pressure level at 1 m	dB(A)	59	60	61	61
Dimension (w × h × d) / Net weight	mm / kg	1130×1760×580 / 187	1250×1760×580 / 214	1250×1760×580 / 214	1250×1760×580 / 234
Operating temperature range - cooling / heating	°C	-15-55 / -30-30	-15-55 / -30-30	-15-55 / -30-30	-15-55 / -30-30

MODEL		SDV6-E615ASI			
Capacity cooling / heating max.	kW	61,5 / 69,0			
Power supply	phase / Hz / V	3~ / 50 / 380-415			
SEER / SCOP	-	5,8 / 4,0			
Max. number of indoor units	-	36			
Sound pressure level at 1 m	dB(A)	62			
Dimension (w × h × d) / Net weight	mm / kg	1250×1760×580 / 234			
Operating temperature range - cooling / heating	°C	-15-55 / -30-30			



# OUTDOOR UNITS WITH TOP AIR DISCHARGE

## SDV6 INDIVIDUAL TOP AIR DISCHARGE

**R410A**  
REFRIGERANT

### FEATURES

- Autoaddressing of indoor units
- Combination of indoor units 50 - 130 %
- Heat up to -30 °C outside temperature
- Space saving design
- Power input limitation 40-100 %
- ALARM, ON/OFF, DEFROST signal
- Optionally BMS gateways MODBUS, BACNET

SDV6-E500ATI  
SDV6-E560ATI  
SDV6-E615ATI  
SDV6-E670ATI

SDV6-E252ATI  
SDV6-E280ATI  
SDV6-E335ATI  
SDV6-E400ATI  
SDV6-E450ATI



SDV6-E730ATI  
SDV6-E785ATI  
SDV6-E850ATI  
SDV6-E900ATI

### TECHNICAL PARAMETERS

MODEL		SDV6-E252ATI	SDV6-E280ATI	SDV6-E335ATI	SDV6-E400ATI
Capacity cooling / heating max.	kW	25,2 / 27,0	28,0 / 31,5	33,5 / 37,5	40,0 / 45,0
Power supply	phase / Hz / V	3~ / 50 / 380-415	3~ / 50 / 380-415	3~ / 50 / 380-415	3~ / 50 / 380-415
SEER / SCOP	-	7,2 / 4,1	6,8 / 4,1	6,3 / 4,1	6,3 / 4,1
Max. number of indoor units	-	13	16	19	23
Sound pressure level at 1 m	dB(A)	58	58	61	65
Dimension (w × h × d) / Net weight	mm / kg	940×1760×825 / 195	940×1760×825 / 195	940×1760×825 / 195	940×1760×825 / 215
Operating temperature range - cooling / heating	°C	-15-55 / -30-30	-15-55 / -30-30	-15-55 / -30-30	-15-55 / -30-30

MODEL		SDV6-E450ATI	SDV6-E500ATI	SDV6-E560ATI	SDV6-E615ATI
Capacity cooling / heating max.	kW	45,0 / 50,0	50,0 / 56,5	56,0 / 63,0	61,5 / 69,0
Power supply	phase / Hz / V	3~ / 50 / 380-415	3~ / 50 / 380-415	3~ / 50 / 380-415	3~ / 50 / 380-415
SEER / SCOP	-	6,0 / 4,0	6,1 / 4,1	6,0 / 4,0	5,9 / 4,2
Max. number of indoor units	-	26	29	33	36
Sound pressure level at 1 m	dB(A)	65	65	66	66
Dimension (w × h × d) / Net weight	mm / kg	940×1760×825 / 215	1340×1760×825 / 295	1340×1760×825 / 295	1340×1760×825 / 315
Operating temperature range - cooling / heating	°C	-15-55 / -30-30	-15-55 / -30-30	-15-55 / -30-30	-15-55 / -30-30

MODEL		SDV6-E670ATI	SDV6-E730ATI	SDV6-E785ATI	SDV6-E850ATI
Capacity cooling / heating max.	kW	67,0 / 75,0	73,0 / 81,5	78,5 / 87,5	85,0 / 95,0
Power supply	phase / Hz / V	3~ / 50 / 380-415	3~ / 50 / 380-415	3~ / 50 / 380-415	3~ / 50 / 380-415
SEER / SCOP	-	5,9 / 4,0	5,6 / 4,1	5,8 / 4,0	5,7 / 3,9
Max. number of indoor units	-	39	43	46	50
Sound pressure level at 1 m	dB(A)	67	68	68	68
Dimension (w × h × d) / Net weight	mm / kg	1340×1760×825 / 315	1880×1760×825 / 366	1880×1760×825 / 396	1880×1760×825 / 396
Operating temperature range - cooling / heating	°C	-15-55 / -30-30	-15-55 / -30-30	-15-55 / -30-30	-15-55 / -30-30

MODEL		SDV6-E900ATI			
Capacity cooling / heating max.	kW	90,0 / 100,0			
Power supply	phase / Hz / V	3~ / 50 / 380-415			
SEER / SCOP	-	5,6 / 3,8			
Max. number of indoor units	-	53			
Sound pressure level at 1 m	dB(A)	68			
Dimension (w × h × d) / Net weight	mm / kg	1880×1760×825 / 396			
Operating temperature range - cooling / heating	°C	-15-55 / -30-30			





# OUTDOOR UNITS WITH TOP AIR DISCHARGE

## SDV6 MODULAR TOP AIR DISCHARGE

**R410A**  
REFRIGERANT

### FEATURES

- Modular connection up to 3 units up to 270 kW
- Autoaddressing of indoor units
- Combination of indoor units 50 - 130 %
- Heat up to -30 °C outside temperature
- Power input limitation 40-100 %
- ALARM, ON/OFF, DEFROST signal
- Optionally BMS gateways MODBUS, BACNET

SDV6-E500ATM  
SDV6-E560ATM  
SDV6-E615ATM  
SDV6-E670ATM

SDV6-E252ATM  
SDV6-E280ATM  
SDV6-E335ATM  
SDV6-E400ATM  
SDV6-E450ATM



### TECHNICAL PARAMETERS

MODEL		SDV6-E252ATM	SDV6-E280ATM	SDV6-E335ATM	SDV6-E400ATM
Capacity cooling / heating max.	kW	25,2 / 27,0	28,0 / 31,5	33,5 / 37,5	40,0 / 45,0
Power supply	phase / Hz / V	3~ / 50 / 380-415	3~ / 50 / 380-415	3~ / 50 / 380-415	3~ / 50 / 380-415
SEER / SCOP	-	7,2 / 4,1	6,8 / 4,1	6,3 / 4,1	6,3 / 4,1
Max. number of indoor units	-	13	16	19	23
Sound pressure level at 1 m	dB(A)	58	58	61	65
Dimension (w × h × d) / Net weight	mm / kg	940×1760×825 / 195	940×1760×825 / 195	940×1760×825 / 195	940×1760×825 / 215
Operating temperature range - cooling / heating	°C	-15-55 / -30-30	-15-55 / -30-30	-15-55 / -30-30	-15-55 / -30-30

MODEL		SDV6-E450ATM	SDV6-E500ATM	SDV6-E560ATM	SDV6-E615ATM
Capacity cooling / heating max.	kW	45,0 / 50,0	50,0 / 56,5	56,0 / 63,0	61,5 / 69,0
Power supply	phase / Hz / V	3~ / 50 / 380-415	3~ / 50 / 380-415	3~ / 50 / 380-415	3~ / 50 / 380-415
SEER / SCOP	-	6,0 / 4,0	6,1 / 4,1	6,0 / 4,0	5,9 / 4,2
Max. number of indoor units	-	26	29	33	36
Sound pressure level at 1 m	dB(A)	65	65	66	66
Dimension (w × h × d) / Net weight	mm / kg	940×1760×825 / 215	1340×1760×825 / 295	1340×1760×825 / 295	1340×1760×825 / 315
Operating temperature range - cooling / heating	°C	-15-55 / -30-30	-15-55 / -30-30	-15-55 / -30-30	-15-55 / -30-30

MODEL		SDV6-E670ATM	SDV6-E730ATM	SDV6-E785ATI	SDV6-E850ATM
Capacity cooling / heating max.	kW	67,0 / 75,0	73,0 / 81,5	78,5 / 87,5	85,0 / 95,0
Power supply	phase / Hz / V	3~ / 50 / 380-415	3~ / 50 / 380-415	3~ / 50 / 380-415	3~ / 50 / 380-415
SEER / SCOP	-	6,0 / 4,1	5,7 / 4,2	5,9 / 4,1	5,8 / 4,0
Max. number of indoor units	-	39	43	46	50
Sound pressure level at 1 m	dB(A)	67	68	68	68
Dimension (w × h × d) / Net weight	mm / kg	1340×1760×825 / 315	1880×1760×825 / 366	1880×1760×825 / 396	1880×1760×825 / 396
Operating temperature range - cooling / heating	°C	-15-55 / -30-30	-15-55 / -30-30	-15-55 / -30-30	-15-55 / -30-30

MODEL		SDV6-E900ATM			
Capacity cooling / heating max.	kW	90,0 / 100,0			
Power supply	phase / Hz / V	3~ / 50 / 380-415			
SEER / SCOP	-	5,8 / 4,0			
Max. number of indoor units	-	53			
Sound pressure level at 1 m	dB(A)	68			
Dimension (w × h × d) / Net weight	mm / kg	1880×1760×825 / 396			
Operating temperature range - cooling / heating	°C	-15-55 / -30-30			



# OUTDOOR UNITS SDV5-3P



# OUTDOOR UNITS WITH TOP AIR DISCHARGE SDV5-3P HEAT RECOVERY MODULAR

**R410A**  
REFRIGERANT

## FEATURES

- Heat recovery system
- Simultaneous cooling and heating
- Continuous heating during defrosting
- High EER and COP
- Modular connection up to 3 units up to 150 kW
- Heat up to -25 °C outside temperature
- Indoor units requires connection via distribution boxes
- Possibility to connect hydrobox
- Optionally BMS gateways MODBUS, BACNET



SDV5-252EA3P  
SDV5-280EA3P  
SDV5-335EA3P

SDV5-400EA3P  
SDV5-450EA3P  
SDV5-500EA3P

## TECHNICAL PARAMETERS

MODEL		SDV5-252EA3P	SDV5-280EA3P	SDV5-335EA3P	SDV5-400EA3P
Capacity cooling / heating max.	kW	22,4 / 25,0	28,0 / 31,5	33,5 / 37,5	40,0 / 45,0
Power supply	phase / Hz / V	3~ / 50 / 380-415	3~ / 50 / 380-415	3~ / 50 / 380-415	3~ / 50 / 380-415
SEER / SCOP	-	7,3 / 4,3	6,6 / 4,4	6,8 / 4,5	6,7 / 4,3
Max. number of indoor units	-	64	64	64	64
Sound pressure level at 1 m	dB(A)	58	58	58	63
Dimension (w × h × d) / Net weight	mm / kg	990×1635×790 / 232	990×1635×790 / 232	990×1635×790 / 232	1340×1635×825 / 300
Operating temperature range - cooling / heating	°C	-15*-52 / -25-27	-15*-52 / -25-27	-15*-52 / -25-27	-15*-52 / -25-27
Operating temperature range - hydrobox hot water	°C	-20-43	-20-43	-20-43	-20-43

MODEL		SDV5-450EA3P	SDV5-500EA3P		
Capacity cooling / heating max.	kW	45,0 / 50,0	50,0 / 56,5		
Power supply	phase / Hz / V	3~ / 50 / 380-415	3~ / 50 / 380-415		
SEER / SCOP	-	6,4 / 4,3	6,2 / 4,4		
Max. number of indoor units	-	64	64		
Sound pressure level at 1 m	dB(A)	64	65		
Dimension (w × h × d) / Net weight	mm / kg	1340×1635×825 / 300	1340×1635×825 / 300		
Operating temperature range - cooling / heating	°C	-15*-52 / -25-27	-15*-52 / -25-27		
Operating temperature range - hydrobox hot water	°C	-20-43	-20-43		

\* -15 °C to -5 °C low temperature cooling operation is just available for distribution box SDV5-01DB3P.



## INDOOR UNITS HYDROBOX FOR SDV5-3P HEAT RECOVERY SYSTEM

### FEATURES

- High temperature hydromodule up to 80 °C
- Heat and DHW mode
- Heat recovery system
- Built-in compressor with refrigerant circuit R134a
- Wired controller included
- Possibility to connect a 3-way valve (not included)
- Requires external water pump

SDV5-140HB3P



### TECHNICAL PARAMETERS

MODEL		SDV5-140HB3P			
Capacity heating A7/W45	kW	14,0			
Power supply	phase / Hz / V	1~ / 50 / 220-240			
Sound pressure level at 1 m	dB(A)	43			
Dimension (w × h × d) / Net weight	mm / kg	450×795×300 / 61			
Operating temperature range - heating	°C	-20~30			
Operating temperature range - hydrobox hot water	°C	-20~43			

# DISTRIBUTION BOXES

## DISTRIBUTION BOXES FOR SDV5-3P HEAT RECOVERY SYSTEM

### FEATURES

- Tree pipes at inlet side and two on the outlet side
- Number of indoor units group from 1 to 12 outlets
- Delivers hot gas for heating and liquid for cooling
- Heat recovery system
- Refrigerant condensed by heating indoor units can be reused for cooling and opposite

SDV5-12DB3P

SDV5-10DB3P

SDV5-08DB3P

SDV5-06DB3P

SDV5-04DB3P

SDV5-01DB3P



### TECHNICAL PARAMETERS

MODEL		SDV5-01DB3P	SDV5-04DB3P	SDV5-06DB3P	SDV5-08DB3P
Max. indoor unit groups	-	1	4	6	8
Max. number of indoor units of each group	-	8	5	5	5
Max. number of all indoor units	-	8	20	30	40
Max. capacity of indoor units of each group	kW	32	16	16	16
Total capacity of all indoor units	kW	32	49	63	85
Sound pressure level at 1 m	dB(A)	40	44	45	47
Dimension (w × h × d) / Net weight	mm / kg	440×195×296 / 11	668×250×574 / 33	668×250×574 / 36	974×250×574 / 48

MODEL		SDV5-10DB3P	SDV5-12DB3P		
Max. indoor unit groups	-	10	12		
Max. number of indoor units of each group	-	5	5		
Max. number of all indoor units	-	47	47		
Max. capacity of indoor units of each group	kW	16	16		
Total capacity of all indoor units	kW	85	85		
Sound pressure level at 1 m	dB(A)	47	47		
Dimension (w × h × d) / Net weight	mm / kg	974×250×574 / 51	974×250×574 / 54		



# SDV6 INDOOR UNITS



## INDOOR UNITS WALL MOUNTED UNITS

### FEATURES

- Design unit with built-in display
- 7 speeds of fan
- Possibility to install 30mm below the ceiling
- Equipped with alarm and ON/OFF contact with selectable logic
- Optionally remote controller SRC-61
- Optionally wired / group controller SWC-61, SWC-62, SWC-63

NEW

SDV6-HXX(S)



### TECHNICAL PARAMETERS

MODEL		SDV6-H15(S)	SDV6-H22(S)	SDV6-H28(S)	SDV6-H36(S)
Capacity cooling / heating	kW	1,5 / 1,8	2,2 / 2,4	2,8 / 3,2	3,6 / 4,0
Power supply	phase / Hz / V	1~ / 50 / 220-240	1~ / 50 / 220-240	1~ / 50 / 220-240	1~ / 50 / 220-240
Sound pressure level at 1 m	dB(A)	32 / 31 / 30 / 30 / 29 / 28 / 27	33 / 32 / 31 / 30 / 29 / 28 / 27	35 / 34 / 33 / 32 / 31 / 30 / 28	37 / 36 / 34 / 33 / 31 / 30 / 28
Dimension (w × h × d) / Net weight	mm / kg	750 × 295 × 265 / 9,0	750 × 295 × 265 / 9,0	750 × 295 × 265 / 10,0	750 × 295 × 265 / 10,0

MODEL		SDV6-H45(S)	SDV6-H56(S)	SDV6-H71(S)	SDV6-H80(S)
Capacity cooling / heating	kW	4,5 / 5,0	5,6 / 6,3	7,1 / 8,0	8,0 / 9,0
Power supply	phase / Hz / V	1~ / 50 / 220-240	1~ / 50 / 220-240	1~ / 50 / 220-240	1~ / 50 / 220-240
Sound pressure level at 1 m	dB(A)	37 / 35 / 33 / 32 / 31 / 30 / 29	41 / 39 / 37 / 35 / 33 / 31 / 29	44 / 42 / 40 / 38 / 36 / 34 / 32	45 / 43 / 41 / 39 / 37 / 35 / 32
Dimension (w × h × d) / Net weight	mm / kg	950 × 295 × 265 / 11,5	950 × 295 × 265 / 11,5	1200 × 295 × 265 / 15,0	1200 × 295 × 265 / 15,0

SDV6-Hxx is not equipped with L+R louver.  
SDV6-HxxS is equipped with L+R louver.

## INDOOR UNITS

### COMPACT FOUR WAY CASSETTE

#### FEATURES

- Very quiet operation of the device from 25dB(A)
- 360° decorative panel and condensate pump included
- 7 speeds of fan
- Separate louver control 1-4
- The units are equipped with a fresh air inlet
- Equipped with alarm and ON/OFF contact with selectable logic
- Optionally remote controller SRC-61
- Optionally wired / group controller SWC-61, SWC-62, SWC-63

SDV6-CCXX



#### TECHNICAL PARAMETERS

MODEL		SDV6-CC15	SDV6-CC22	SDV6-CC28	SDV6-CC36
Capacity cooling / heating	kW	1,5 / 1,8	2,2 / 2,4	2,8 / 3,2	3,6 / 4,0
Power supply	phase / Hz / V	1~ / 50 / 220-240	1~ / 50 / 220-240	1~ / 50 / 220-240	1~ / 50 / 220-240
Sound pressure level at 1 m	dB(A)	29 / 28 / 27 / 27 / 26 / 26 / 25	29 / 28 / 27 / 27 / 26 / 26 / 25	30 / 29 / 28 / 27 / 26 / 26 / 25	31 / 30 / 29 / 28 / 27 / 26 / 26
Dimension (w × h × d) / Net weight	mm / kg	638 × 235 × 575 / 13,0	638 × 235 × 575 / 13,0	638 × 235 × 575 / 13,0	638 × 235 × 575 / 14,0

MODEL		SDV6-CC45	SDV6-CC56	SDV6-CC63	
Capacity cooling / heating	kW	4,5 / 5,0	5,6 / 6,3	6,3 / 7,1	
Power supply	phase / Hz / V	1~ / 50 / 220-240	1~ / 50 / 220-240	1~ / 50 / 220-240	
Sound pressure level at 1 m	dB(A)	37 / 35 / 33 / 31 / 29 / 28 / 27	39 / 38 / 37 / 36 / 35 / 34 / 32	43 / 42 / 40 / 38 / 36 / 35 / 34	
Dimension (w × h × d) / Net weight	mm / kg	638 × 235 × 575 / 14,0	638 × 235 × 575 / 15,0	638 × 235 × 575 / 15,0	



## INDOOR UNITS FOUR WAY CASSETTE UNITS

### FEATURES

- 360° decorative panel and condensate pump included
- 7 speeds of fan
- Separate louver control 1-4
- The units are equipped with a fresh air inlet
- Equipped with alarm and ON / OFF contact with selectable logic
- Optionally remote controller SRC-61
- Optionally wired / group controller SWC-61, SWC-62, SWC-63

SDV6-CXX



### TECHNICAL PARAMETERS

MODEL		SDV6-C71	SDV6-C80	SDV6-C90	SDV6-C100
Capacity cooling / heating	kW	7,1 / 8,0	8,0 / 9,0	9,0 / 10,0	10,0 / 11,0
Power supply	phase / Hz / V	1~ / 50 / 220-240	1~ / 50 / 220-240	1~ / 50 / 220-240	1~ / 50 / 220-240
Sound pressure level at 1 m	dB(A)	37 / 36 / 34 / 33 / 32 / 30 / 29	38 / 37 / 35 / 34 / 32 / 31 / 29	38 / 37 / 35 / 34 / 32 / 31 / 29	41 / 40 / 38 / 37 / 36 / 34 / 33
Dimension (w × h × d) / Net weight	mm / kg	840 × 204 × 840 / 22,0	840 × 204 × 840 / 22,0	840 × 246 × 840 / 22,0	840 × 288 × 840 / 24,0

MODEL		SDV6-C112	SDV6-C140		
Capacity cooling / heating	kW	11,2 / 12,5	14,0 / 16,0		
Power supply	phase / Hz / V	1~ / 50 / 220-240	1~ / 50 / 220-240		
Sound pressure level at 1 m	dB(A)	43 / 42 / 40 / 39 / 37 / 36 / 34	43 / 42 / 40 / 39 / 37 / 36 / 34		
Dimension (w × h × d) / Net weight	mm / kg	840 × 288 × 840 / 24,0	840 × 288 × 840 / 26,5		

# INDOOR UNITS

## DUCT MEDIUM STATIC PRESSURE

### FEATURES

- External static pressure up to 160 Pa
- Condensate pump included
- 7 speeds of fan
- Possibility of flexible connection of air ducts
- The units are equipped with a fresh air inlet
- Equipped with alarm and ON/OFF contact with selectable logic
- Optionally wired / group controller SWC-61, SWC-62, SWC-63

SDV6-DMXX



### TECHNICAL PARAMETERS

MODEL		SDV6-DM15	SDV6-DM22	SDV6-DM28	SDV6-DM36
Capacity cooling / heating	kW	1,5 / 1,8	2,2 / 2,4	2,8 / 3,2	3,6 / 4,0
Power supply	phase / Hz / V	1~ / 50 / 220-240	1~ / 50 / 220-240	1~ / 50 / 220-240	1~ / 50 / 220-240
Sound pressure level at 1 m	dB(A)	27 / 26 / 25 / 24 / 23 / 23 / 22	27 / 26 / 25 / 24 / 23 / 23 / 22	27 / 26 / 25 / 24 / 23 / 23 / 22	29 / 28 / 27 / 26 / 25 / 23 / 22
External static pressure	nom. / min - max	30 / 10 - 160	30 / 10 - 160	30 / 10 - 160	30 / 10 - 160
Dimension (w × h × d) / Net weight	mm / kg	710 × 245 × 770 / 18,5	710 × 245 × 770 / 18,5	710 × 245 × 770 / 18,5	710 × 245 × 770 / 18,5

MODEL		SDV6-DM45	SDV6-DM56	SDV6-DM71	SDV6-DM80
Capacity cooling / heating	kW	4,5 / 5,0	5,6 / 6,3	7,1 / 8,0	8,0 / 9,0
Power supply	phase / Hz / V	1~ / 50 / 220-240	1~ / 50 / 220-240	1~ / 50 / 220-240	1~ / 50 / 220-240
Sound pressure level at 1 m	dB(A)	33 / 32 / 30 / 28 / 27 / 25 / 24	33 / 32 / 31 / 30 / 28 / 26 / 25	35 / 34 / 32 / 31 / 29 / 28 / 26	37 / 36 / 34 / 33 / 31 / 30 / 28
External static pressure	nom. / min - max	30 / 10 - 160	30 / 10 - 160	30 / 10 - 160	40 / 10-160
Dimension (w × h × d) / Net weight	mm / kg	710 × 245 × 770 / 19,5	910 × 245 × 770 / 24,0	910 × 245 × 770 / 25,0	1160 × 245 × 770 / 30,0

MODEL		SDV6-DM90	SDV6-DM112	SDV6-DM125	SDV6-DM140
Capacity cooling / heating	kW	9,0 / 10,0	11,2 / 12,5	12,5 / 14,0	14,0 / 16,0
Power supply	phase / Hz / V	1~ / 50 / 220-240	1~ / 50 / 220-240	1~ / 50 / 220-240	1~ / 50 / 220-240
Sound pressure level at 1 m	dB(A)	37 / 36 / 34 / 33 / 31 / 30 / 28	39 / 37 / 35 / 33 / 31 / 29 / 28	40 / 38 / 36 / 34 / 32 / 30 / 29	40 / 38 / 36 / 34 / 32 / 30 / 29
External static pressure	nom. / min - max	40 / 10-160	40 / 10-160	40 / 10-160	50 / 10-160
Dimension (w × h × d) / Net weight	mm / kg	1160 × 245 × 770 / 31,0	1510 × 245 × 770 / 37,0	1510 × 245 × 770 / 39,0	1510 × 245 × 770 / 39,0

MODEL		SDV6-DM160			
Capacity cooling / heating	kW	16,0 / 18,0			
Power supply	phase / Hz / V	1~ / 50 / 220-240			
Sound pressure level at 1 m	dB(A)	42 / 40 / 38 / 36 / 34 / 33 / 31			
External static pressure	nom. / min - max	50 / 10-160			
Dimension (w × h × d) / Net weight	mm / kg	1510 × 245 × 770 / 39,0			



## INDOOR UNITS FLOOR/CEILING UNITS

### FEATURES

- They can be installed in a horizontal or vertical position
- Massive distribution of air to all corners of the room
- 7 speeds of fan
- Equipped with alarm and ON/OFF contact with selectable logic
- Optionally remote controller SRC-61
- Optionally wired / group controller SWC-61, SWC-62, SWC-63

SDV6-FXX



### TECHNICAL PARAMETERS

MODEL		SDV6-F36	SDV6-F45	SDV6-F56	SDV6-F71
Capacity cooling / heating	kW	3,6 / 4,0	4,5 / 5,0	5,6 / 6,3	7,1 / 8,0
Power supply	phase / Hz / V	1~ / 50 / 220-240	1~ / 50 / 220-240	1~ / 50 / 220-240	1~ / 50 / 220-240
Sound pressure level at 1,4 m	dB(A)	32 / 30 / 29 / 28 / 27 / 26 / 25	36 / 35 / 34 / 33 / 32 / 31 / 30	43 / 41 / 40 / 38 / 36 / 34 / 33	43 / 40 / 39 / 37 / 35 / 34 / 33
Dimension (w × h × d) / Net weight	mm / kg	1069 × 674 × 234 / 24,7	1069 × 674 × 234 / 24,7	1069 × 674 × 234 / 24,7	1284 × 674 × 234 / 29,8

MODEL		SDV6-F80	SDV6-F90	SDV6-F100	SDV6-F112
Capacity cooling / heating	kW	8,0 / 9,0	9,0 / 10,0	10,0 / 11,2	11,2 / 12,5
Power supply	phase / Hz / V	1~ / 50 / 220-240	1~ / 50 / 220-240	1~ / 50 / 220-240	1~ / 50 / 220-240
Sound pressure level at 1,4 m	dB(A)	45 / 44 / 42 / 40 / 38 / 36 / 34	48 / 47 / 46 / 44 / 42 / 40 / 37	42 / 40 / 39 / 37 / 35 / 33 / 32	44 / 42 / 41 / 39 / 37 / 35 / 33
Dimension (w × h × d) / Net weight	mm / kg	1284 × 674 × 234 / 29,8	1284 × 674 × 234 / 29,8	1649 × 674 × 234 / 36,4	1649 × 674 × 234 / 36,4

MODEL		SDV6-F125	SDV6-F140		
Capacity cooling / heating	kW	12,5 / 14,0	14,0 / 16,0		
Power supply	phase / Hz / V	1~ / 50 / 220-240	1~ / 50 / 220-240		
Sound pressure level at 1,4 m	dB(A)	49 / 48 / 46 / 44 / 42 / 40 / 38	52 / 50 / 48 / 46 / 44 / 42 / 40		
Dimension (w × h × d) / Net weight	mm / kg	1649 × 674 × 234 / 36,4	1649 × 674 × 234 / 36,4		

# AHU CONTROL BOX



**FEATURES**

- Integration of all SDV outdoor units using refrigerant R410A with air handling unit refrigerant exchangers
- Control using 0-10V allows control according to the power of the outdoor unit 0-100%
- Wired controller SWC-86ED is included
- The equipment includes an expansion valve for refrigerant control as well as a set of temperature sensors

AHUKZ-XXD



WIRED CONTROLLER  
 SWC-86ED  
 AS STANDARD

**TECHNICAL PARAMETERS**

MODEL		AHUKZ-00D	AHUKZ-01D	AHUKZ-02D	AHUKZ-03D
Capacity cooling / heating	kW	2,2 - 8,0	9,0 - 20,0	21,0 / 36,0	37,0 / 56,0
Power supply	phase / Hz / V	1~ / 50 / 220-240	1~ / 50 / 220-240	1~ / 50 / 220-240	1~ / 50 / 220-240
Expansion valve	-	yes	yes	yes	yes
Dimension (w x h x d) / Net weight	mm / kg	393 x 341 x 125 / 5,6	393 x 341 x 125 / 5,6	393 x 341 x 125 / 5,9	393 x 341 x 125 / 6,0

# OUTDOOR AND INDOOR UNITS HIGH PRESSURE STATIC DUCT SERIES

**R410A**  
REFRIGERANT

## FEATURES - OUTDOOR UNITS

- Compact design
- Mode priority settings
- 20 - 33,5 kW allow to connect 1 indoor unit
- 40 - 56 kW allow to connect 1 - 2 indoor units based on combination table on next page
- Optionally BMS gateways MODBUS, BACNET



## TECHNICAL PARAMETERS

MODEL		SODH-200AI	SODH-224AI	SODH-280AI	SODH-335AI
Capacity cooling / heating	kW	20,0 / 20,0	22,4 / 22,4	28,0 / 28,0	33,5 / 33,5
Power supply	phase / Hz / V	3~ / 50 / 380-415	3~ / 50 / 380-415	3~ / 50 / 380-415	3~ / 50 / 380-415
SEER / SCOP	-	7,2 / 4,0	6,9 / 4,3	6,9 / 4,5	6,4 / 4,1
Sound pressure level at 1 m	dB(A)	58	58	60	61
Dimension (w x h x d) / Net weight	mm / kg	1120 x 1558 x 528 / 143,0	1120 x 1558 x 528 / 143,0	1120 x 1558 x 528 / 144,0	1120 x 1558 x 528 / 157,0
Operating temperature range - cooling / heating	°C	-5~48 / -20~24	-5~48 / -20~24	-5~48 / -20~24	-5~48 / -20~24

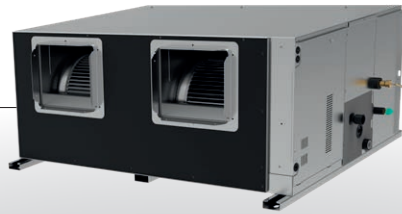
MODEL		SODH-400AI	SODH-450AI	SODH-560AI	
Capacity cooling / heating	kW	40,0 / 40,0	45,0 / 45,0	56,0 / 56,0	
Power supply	phase / Hz / V	3~ / 50 / 380-415	3~ / 50 / 380-415	3~ / 50 / 380-415	
SEER / SCOP	-	6,2 / 4,7	6,1 / 4,8	5,9 / 4,4	
Sound pressure level at 1 m	dB(A)	59	60	61	
Dimension (w x h x d) / Net weight	mm / kg	1130 x 1760 x 580 / 187,0	1250 x 1760 x 580 / 214,0	1250 x 1760 x 580 / 234,0	
Operating temperature range - cooling / heating	°C	-15~55 / -30~30	-15~55 / -30~30	-15~55 / -30~30	

Available combinations of units are mentioned on next page.

## FEATURES - INDOOR UNITS

- External static pressure up to 400 Pa
- Condensate pump not included
- 7 speeds of fan
- Possibility of flexible connection of air ducts
- Equipped with alarm and ON/OFF contact with selectable logic
- Possibility of flexible connection of air ducts
- Optionally wired / group controller SWC-61, SWC-62, SWC-63

SIDH-200AI  
SIDH-224AI  
SIDH-280AI  
SIDH-335AI



SIDH-400AI  
SIDH-450AI  
SIDH-560AI



## TECHNICAL PARAMETERS

MODEL		SIDH-200AI	SIDH-224AI	SIDH-280AI	SIDH-335AI
Capacity cooling / heating	kW	20,0 / 24,4	22,4 / 25,0	28,0 / 31,5	33,5 / 38,0
Power supply	phase / Hz / V	1~ / 50 / 220-240	1~ / 50 / 220-240	1~ / 50 / 220-240	1~ / 50 / 220-240
Sound pressure level at 1 m	dB(A)	51 / 50 / 48 / 46 / 44 / 43 / 42	51 / 50 / 48 / 46 / 44 / 43 / 42	51 / 50 / 48 / 46 / 44 / 43 / 42	52 / 51 / 49 / 48 / 46 / 44 / 43
External static pressure	nom. / min - max	200 / 0 - 400	200 / 0 - 400	200 / 0 - 400	200 / 0 - 400
Dimension (w × h × d) / Net weight	mm/kg	1300 × 580 × 900 / 125,0	1300 × 580 × 900 / 125,0	1300 × 580 × 900 / 125,0	1300 × 580 × 900 / 128,0

MODEL		SIDH-400AI	SIDH-450AI	SIDH-560AI	
Capacity cooling / heating	kW	40,0 / 45,0	45,0 / 56,0	56,0 / 63,0	
Power supply	phase / Hz / V	1~ / 50 / 220-240	1~ / 50 / 220-240	1~ / 50 / 220-240	
Sound pressure level at 1 m	dB(A)	58 / 56 / 54 / 52 / 50 / 49 / 48	58 / 56 / 54 / 52 / 50 / 49 / 48	59 / 58 / 56 / 54 / 53 / 51 / 49	
External static pressure	nom. / min - max	300 / 0 - 400	300 / 0 - 400	300 / 0 - 400	
Dimension (w × h × d) / Net weight	mm/kg	1800 × 580 × 1060 / 166,0	1800 × 580 × 1060 / 166,0	1800 × 580 × 1060 / 170,0	

## ALLOWED COMBINATIONS OF UNITS

MODEL	SODH-200AI	SODH-224AI	SODH-280AI	SODH-335AI	SODH-400AI	SODH-450AI	SODH-560AI
SIDH-200AI	1	1	1	1	* 2	* 2	* 2
SIDH-224AI	-	1	1	1	1	* 2	* 2
SIDH-280AI	-	-	1	1	1	1	* 2
SIDH-335AI	-	-	-	1	1	1	1
SIDH-400AI	-	-	-	-	1	1	1
SIDH-450AI	-	-	-	-	-	1	1
SIDH-560AI	-	-	-	-	-	-	1

\* Refnets are not included, must be purchased individually.

## ACCESSORIES SDV6, SDV5 CONTROLLERS, EXTENSION KITS, BMS GATEWAYS



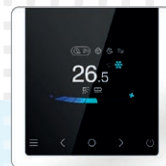
### REMOTE CONTROLLER SRC-61

- Compatible with indoor units SDV6 (except SDV6-DMxx)
- Address setting
- Turn off display
- Indoor unit basic parameter setting
- Supports separate louver control (only for cassette type)



### WIRED CONTROLLERS SWC-61

- Compatible with indoor units SDV6 and SIDH
- Remote controller receiver
- Follow me function
- Turn off display
- Buzzer sound turn off function
- Child lock
- Address setting
- Indoor unit basic parameter setting
- Indoor / Outdoor unit error code checking function
- Supports group control up to 16 indoor units
- Supports master and slave setting of controller



### WIRED CONTROLLERS SWC-62

- Compatible with indoor units SDV6 and SIDH
- Size 86 × 86 mm, color screen
- Remote controller receiver
- Follow me function
- Weekly timer
- Wifi module inside
- Turn off display
- Buzzer sound turn off function
- Child lock
- Address setting
- Indoor unit basic parameter setting
- Supports separate louver control (only for cassette type)
- Indoor / Outdoor unit error code checking function
- Supports group control up to 16 indoor units
- Supports master and slave setting of controller

## remote and wired controllers



### CENTRAL CONTROLLER CCM-180A

- Can be connected to SDV6 or SDV5 outdoor units which use SDV5 protocol.
- Stylish central controller with touch screen 6,2 inch
- Connects up to 64 indoor units, up to 8 refrigerant circuits
- User friendly interface
- Weekly timer
- Single or central control
- Internet connection via LAN or WiFi



### CENTRAL CONTROLLER SCC-61

- Can be connected to SDV6 outdoor units which use SDV6 protocol.
- Stylish central controller with touch screen 10,1 inch
- Connects up to 6 × 64 indoor units, up to 6 × 8 refrigerant circuits
- User friendly interface
- Weekly timer
- Single or central control
- Internet connection via LAN or WiFi
- IMMPROII software for calculation of electricity consumption by means of digitam energy meter SEM-01.



### CENTRAL CONTROLLER CCM-270A

- Can be connected to SDV6 or SDV5 outdoor units which use SDV6 protocol.
- Stylish central controller with touch screen 10,1 inch
- Connects up to 6 × 64 indoor units, up to 6 × 8 refrigerant circuits
- User friendly interface
- Weekly timer
- Single or central control
- Internet connection via LAN or WiFi
- IMMPROII software for calculation of electricity consumption by means of digitam energy meter SEM-01.

## central controllers





### WIRED CONTROLLERS SWC-63

- Compatible with indoor units SDV6 and SIDH
- Size 120 × 120 mm, color screen
- Remote controller receiver
- Follow me function
- Weekly timer
- Wifi module inside
- Turn off display
- Buzzer sound turn off function
- Child lock
- Address setting
- Indoor unit basic parameter setting
- Supports separate louver control (only for cassette type)
- Indoor / Outdoor unit error code checking function
- Supports group control up to 16 indoor units
- Supports master and slave setting of controller



### EXTENSION KIT SDV5-EK

- Can be connected to SDV6 or SDV5 outdoor units which use SDV5 protocol.
- Allows connecting two central controllers or one central controller and BMS control.



### EXTENSION KIT SDV6-EK

- Can be connected to SDV6 outdoor units which use SDV6 protocol.
- Allows connecting two central controllers or one central controller and BMS control.

extension kits



### MODBUS GATEWAY SDV6-MOD

- Can be connected to SDV6 outdoor units which use SDV6 protocol
- Connects up to 64 indoor units, up to 8 refrigerant circuits
- Can be used for connection of external control system, which uses Modbus protocol
- Control software is not included, it has to be field supplied



### MODBUS GATEWAY SDV5-MOD

- Can be connected to SDV6 or SDV5 outdoor units which use SDV5 protocol.
- Connects up to 64 indoor units, up to 8 refrigerant circuits
- Can be used for connection of external control system, which uses Modbus protocol
- Control software is not included, it has to be field supplied



### BACNET GATEWAY SDV6-BAC

- Can be connected to SDV6 outdoor units which use SDV6 protocol
- Connects up to 3 × 64 indoor units, up to 3 × 8 refrigerant circuits



### BACNET GATEWAY GW-BAC

- Can be connected to SDV6 or SDV5 outdoor units which use SDV5 protocol.
- Connects up to 3 × 64 indoor units, up to 3 × 8 refrigerant circuits
- Can be used for connection of external control system, which uses Bacnet protocol
- Control software is not included, it has to be field supplied



### KNX GATEWAY KNX-03

- Can be connected to SDV6 indoor unit
- Can be used for connection of external control system, which uses Modbus protocol
- Control software is not included, it has to be field supplied

BMS gateways

Water. A colourless, clear, tasteless and odourless liquid that can be both heated and cooled.

#### MINI CHILLERS

Sinclair DC Inverter Mini Chillers adopt **unitary structure design and a hydraulic module** is built in the outdoor unit. It is an air-cooled water heat pump chiller so there is no need of cooling water tower at the condensing side.

**Cooling capacity of DC inverter Mini Chillers range is from 5 kW to 16 kW** and it can be freely combined with fan coil units & floor heating. These units are designed for residential applications or light commercial applications that require cold or hot water.

#### MODULAR CHILLERS

Sinclair DC Inverter Modular Chillers adopt inner grooved copper tubes and hydrophilic aluminium fins greatly improving heat exchange in units of **75 kW, 90 kW, 140kW and 180 kW. By the maximum combination of 16 units it is possible to get capacity of 2 240 kW.** These modular chillers use **high efficient DC inverter compressors.**

The advantage of modular connection is that if one module fails, other modules can become the back-up to provide a continuing operation. Chillers are freely combinable with fan coil units and air handling units. Project owners may choose the best types according to their design taste (for interior) or needs for functions.

#### FAN COIL UNITS

Convective-based indoor units. Main part is a fan and heat exchanger. Work similarly to air conditioning, but the medium here is water. We offer **wall-mounted, cassette, duct and floor-ceiling fan coils.**

The DC fan coil units have advanced technology of **high-energy efficiency, low noise operation and precise temperature control**, so they are ideal for hospitals, office buildings, hotels, airports and various other applications.

A man with a beard, wearing a light blue sweater, is smiling while looking at his laptop. He is sitting at a wooden desk. In the background, a woman in a blue blazer is also working on a laptop at another desk. The office has large windows and indoor plants.

A2W systems  
SCV mini chillers R32  
SCV modular chillers  
Fan coil units



# OUTDOOR UNITS

**FEATURES**

- Energy saving – energy class A+++
- Low noise emission
- Easy installation and high reliability
- Integrated and compact design - include the hydraulic module
- Wired controller SWC-120F included
- HEAT/COOL, ON/OFF signal
- WiFi application
- Support MODBUS
- Modular connection up to 6 units up to 96 kW

SCV-50EB  
 SCV-70EB  
 SCV-100EB  
 SCV-120EB  
 SCV-140EB  
 SCV-160EB  
 SCV-120EB-3  
 SCV-140EB-3  
 SCV-160EB-3



**TECHNICAL PARAMETERS**

MODEL		SCV-50EB	SCV-70EB	SCV-100EB	SCV-120EB SCV-120EB-3
Capacity cooling / heating max.	kW	5,5 / 6,5	7,4 / 8,4	9,0 / 10,0	11,6 / 12,2
Power supply	phase / Hz / V	1~ / 50 / 220-240	1~ / 50 / 220-240	1~ / 50 / 220-240	1~ / 50 / 220-240 3~ / 50 / 380-415
SEER / SCOP W35 °C Average climate	-	5,1 / 5,1	5,2 / 5,2	5,1 / 5,1	5,1 / 5,1
Sound pressure level at 1 m	dB(A)	48	51	53	56 57
Dimension (w × h × d) / Net weight	mm / kg	1040×865×410 / 87	1040×865×410 / 87	1040×865×410 / 87	1040×865×410 / 106 1040×865×410 / 120
Operating temperature range - cooling / heating	°C	-5~43 / -25~35	-5~43 / -25~35	-5~43 / -25~35	-5~43 / -25~35
Water temperature range - cooling / heating	°C	5~25 / 25~65	5~25 / 25~65	5~25 / 25~65	5~25 / 25~65

MODEL		SCV-140EB SCV-140EB-3	SCV-160EB SCV-160EB-3		
Capacity cooling / heating max.	kW	13,4 / 14,1	14,0 / 16,0		
Power supply	phase / Hz / V	1~ / 50 / 220-240 3~ / 50 / 380-415	1~ / 50 / 220-240 3~ / 50 / 380-415		
SEER / SCOP W35 °C Average climate	-	4,9 / 5,1	4,8 / 5,1		
Sound pressure level at 1 m	dB(A)	58 59	58 59		
Dimension (w × h × d) / Net weight	mm / kg	1040×865×410 / 106 1040×865×410 / 120	1040×865×410 / 106 1040×865×410 / 120		
Operating temperature range - cooling / heating	°C	-5~43 / -25~35	-5~43 / -25~35		
Water temperature range - cooling / heating	°C	5~25 / 25~65	5~25 / 25~65		

# OUTDOOR UNITS



**FEATURES**

- Modular connection up to 16 units (75, 80, 140 kW), 8 units 180kW
- Modularly connected chiller can be controlled by a single wired controller
- Integrated and compact design - H version include the hydraulic module
- Wired controller KJRM-120H2 included
- HEAT/COOL, ON/OFF signal
- Support MODBUS

SCV-900EB  
SCV-900EBH

SCV-1400EB  
SCV-1400EBH

SCV-750EB  
SCV-750EBH

SCV-1800EB  
SCV-1800EBH



WIRED CONTROLLER  
KJRM-120H2  
AS STANDARD

**TECHNICAL PARAMETERS**

MODEL		SCV-750EB	SCV-750EBH	SCV-900EB	SCV-900EBH
Capacity cooling A35W7 / heating A7W35	kW	70,0 / 75,0	69,7 / 57,4	82,0 / 90,0	82,0 / 90,0
Power supply	phase / Hz / V	3~ / 50 / 380-415	3~ / 50 / 380-415	3~ / 50 / 380-415	3~ / 50 / 380-415
SEER / SCOP W35 °C Average climate	-	4,3 / 4,1	4,22 / 4	4,5 / 4	4,4 / 3,8
Sound pressure level at 1 m	dB(A)	69	69	65	65
Dimension (w × h × d) / Net weight	mm / kg	2000×1770×960 / 440	2000×1770×960 / 475	2220×2315×1135 / 635	2220×2315×1135 / 686
Operating temperature range - cooling / heating	°C	-10-48 / -20-43	-10-48 / -20-43	-10-48 / -20-43	-10-48 / -20-43
Water temperature range - cooling / heating	°C	5-20 / 25-54	5-20 / 25-54	5-20 / 25-54	5-20 / 25-54

MODEL		SCV-1400EB	SCV-1400EBH	SCV-1800EB	SCV-1800EBH
Capacity cooling A35W7 / heating A7W35	kW	130,0 / 138,0	129,5 / 138,6	164,0 / 180,0	163,0 / 181,2
Power supply	phase / Hz / V	3~ / 50 / 380-415	3~ / 50 / 380-415	3~ / 50 / 380-415	3~ / 50 / 380-415
SEER / SCOP W35 °C Average climate	-	4,4 / 3,9	4,3 / 3,7	4,4 / 3,8	4,4 / 3,7
Sound pressure level at 1 m	dB(A)	73	74	72	72
Dimension (w × h × d) / Net weight	mm / kg	2220×2300×1135 / 670	2220×2300×1135 / 746	2220×2413×2752 / 1400	2220×2413×2752 / 1500
Operating temperature range - cooling / heating	°C	-10-48 / -20-43	-10-48 / -20-43	-10-48 / -20-43	-10-48 / -20-43
Water temperature range - cooling / heating	°C	5-20 / 25-54	5-20 / 25-54	5-20 / 25-54	5-20 / 25-54

SCV-750B, SCV-900EB, SCV-1400EB and SCV-1800EB don't include hydraulic module due to variabilities of particular projects.  
SCV-750BH, SCV-900EBH, SCV-1400EBH and SCV-1800EBH include hydraulic module.

# FCU INDOOR UNITS





## FCU INDOOR UNITS WALL MOUNTED UNITS, 2 PIPES

### FEATURES

- Design unit with built-in display
- Built-in 3-way electromagnetic valve
- Remote controller R05 in package
- Optionally wired controller KJR-29B
- Optionally central controller SCM-30
- Support Modbus RTU
- Equipped with alarm and ON/OFF contact
- Possibility of using external control of fan speed (low, medium, high) by 0-10V DC

SF-XXXHM2



REMOTE CONTROLLER  
R05 AS STANDARD

### TECHNICAL PARAMETERS

MODEL		250HM2	SF-400HM2	SF-600HM2	
Capacity cooling / heating	kW	2,7 / 2,9	3,8 / 4,3	4,9 / 5,3	
Power supply	phase / Hz / V	1~ / 50 / 220-240	1~ / 50 / 220-240	1~ / 50 / 220-240	
Sound pressure level at 1 m	dB(A)	32 / 30 / 27	45 / 39 / 35	44 / 40 / 35	
Dimension (w × h × d) / Net weight	mm / kg	915 × 290 × 230 / 12,7	915 × 290 × 230 / 12,7	1072 × 315 × 230 / 14,9	

## FCU INDOOR UNITS

### FOUR-WAY COMPACT CASSETTE UNITS, 2 PIPES

#### FEATURES

- Decorative panel included
- Drainage water pump included
- Fresh air connection
- Remote controller R05 in package
- Optionally wired controller KJR-29B
- Optionally central controller SCM-30
- Optionally drip pan SDF-CC
- Support Modbus RTU
- Equipped with alarm and ON/OFF contact

SF-300-500C2M



REMOTE CONTROLLER  
R05 AS STANDARD

#### TECHNICAL PARAMETERS

MODEL		SF-300C2M	SF-400C2M	SF-500C2M	
Capacity cooling / heating	kW	3,0 / 2,6	4,0 / 4,1	4,2 / 5,0	
Power supply	phase / Hz / V	1~ / 50 / 220-240	1~ / 50 / 220-240	1~ / 50 / 220-240	
Sound pressure level at 1 m	dB(A)	39 / 33 / 27	42 / 36 / 30	43 / 38 / 32	
Dimension (w × h × d) / Net weight	mm / kg	575 × 261 × 575 / 16,5	575 × 261 × 575 / 16,5	575 × 261 × 575 / 16,5	

Four-way cassette with 2 pipes doesn't include 3 or 2-way valve in the package. The valve uses the characteristics of NC (normally closed) and power supply 230V from fan coil unit. SINCLAIR doesn't offer valves.

## FCU INDOOR UNITS

### FOUR-WAY COMPACT CASSETTE UNITS, 4 PIPES

#### FEATURES

- Decorative panel included
- Independent connection to the heating and cooling circuits
- Drainage water pump included
- Fresh air connection
- Remote controller R05 in package
- Optionally wired controller KJR-29B
- Optionally central controller SCM-30
- Optionally drip pan SDF-CC
- Support Modbus RTU
- Equipped with alarm and ON/OFF contact

SF-300-500C4M



REMOTE CONTROLLER  
R05 AS STANDARD

#### TECHNICAL PARAMETERS

MODEL		SF-300C4M	SF-400C4M	SF-500C4M	
Capacity cooling / heating	kW	2,2 / 3,1	2,8 / 3,7	2,8 / 3,9	
Power supply	phase / Hz / V	1~ / 50 / 220-240	1~ / 50 / 220-240	1~ / 50 / 220-240	
Sound pressure level at 1 m	dB(A)	39 / 33 / 27	42 / 35 / 30	44 / 39 / 31	
Dimension (w × h × d) / Net weight	mm / kg	575 × 261 × 575 / 16,7	575 × 261 × 575 / 16,7	575 × 261 × 575 / 16,7	

Four-way cassette with 4 pipes doesn't include 3 or 2-way valve in the package. The valve uses the characteristics of NC (normally closed) and power supply 230V from fan coil unit. SINCLAIR doesn't offer valves.

## FCU INDOOR UNITS FOUR-WAY CASSETTE UNITS, 2 PIPES

### FEATURES

- Decorative panel included
- Drainage water pump included
- 7 speeds of fan
- Fresh air connection
- Optionally Remote controller SRC-61
- Optionally wired controller SWC-61
- Optionally central controller SCM-30
- Support Modbus RTU
- Equipped with ON/OFF contact

NEW

SF2-600-1200C2



OPTIONAL  
REMOTE CONTROLLER  
SRC-61



### TECHNICAL PARAMETERS

MODEL		SF2-600C2	SF2-700C2	SF2-800C2	SF2-1000C2
Capacity cooling / heating	kW	5,5 / 6,5	6,5 / 7,5	7,5 / 8,5	8,5 / 9,5
Power supply	phase / Hz / V	1~ / 50 / 220-240	1~ / 50 / 220-240	1~ / 50 / 220-240	1~ / 50 / 220-240
Sound pressure level at 1 m	dB(A)	40 / 38 / 35 / 32 / 29 / 26 / 22	37 / 35 / 32 / 29 / 26 / 24 / 21	41 / 39 / 36 / 33 / 29 / 26 / 23	47 / 45 / 42 / 38 / 35 / 31 / 27
Dimension (w × h × d) / Net weight	mm / kg	840 × 204 × 840 / 19,3	840 × 288 × 840 / 23,6	840 × 288 × 840 / 23,6	840 × 288 × 840 / 23,6

MODEL		SF2-1200C2			
Capacity cooling / heating	kW	10,5 / 12,0			
Power supply	phase / Hz / V	1~ / 50 / 220-240			
Sound pressure level at 1 m	dB(A)	52 / 49 / 47 / 44 / 41 / 37 / 32			
Dimension (w × h × d) / Net weight	mm / kg	840 × 288 × 840 / 25,9			

Four-way cassette with 2 pipes doesn't include 3 or 2-way valve in the package. The valve uses the characteristics of NC (normally closed) and power supply 230V from fan coil unit. SINCLAIR doesn't offer valves.

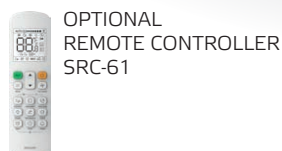
## FCU INDOOR UNITS

### FOUR-WAY CASSETTE UNITS, 4 PIPES

#### FEATURES

- Decorative panel included
- Independent connection to the heating and cooling circuits
- Drainage water pump included
- Fresh air connection
- Optionally Remote controller SRC-61
- Optionally wired controller SWC-61
- Optionally central controller SCM-30
- Support Modbus RTU
- Equipped with ON/OFF contact

SF2-600-1200C4



#### TECHNICAL PARAMETERS

MODEL		SF2-600C4	SF2-700C4	SF2-800C4	SF2-1000C4
Capacity cooling / heating	kW	4,7 / 7,3	5,0 / 7,0	5,5 / 7,5	9,0 / 9,4
Power supply	phase / Hz / V	1~ / 50 / 220-240	1~ / 50 / 220-240	1~ / 50 / 220-240	1~ / 50 / 220-240
Sound pressure level at 1 m	dB(A)	34 / 32 / 29 / 26 / 24 / 22 / 20	37 / 35 / 32 / 28 / 26 / 23 / 21	41 / 39 / 36 / 32 / 29 / 26 / 23	47 / 39 / 28
Dimension (w × h × d) / Net weight	mm / kg	840 × 288 × 840 / 23,9	840 × 288 × 840 / 23,9	840 × 288 × 840 / 23,9	840 × 288 × 840 / 26,2

MODEL		SF2-1200C4			
Capacity cooling / heating	kW	10,0 / 10,8			
Power supply	phase / Hz / V	1~ / 50 / 220-240			
Sound pressure level at 1 m	dB(A)	51 / 44 / 32			
Dimension (w × h × d) / Net weight	mm / kg	840 × 288 × 840 / 26,2			

Four-way cassette with 4 pipes doesn't include 3 or 2-way valve in the package. The valve uses the characteristics of NC (normally closed) and power supply 230V from fan coil unit. SINCLAIR doesn't offer valves.

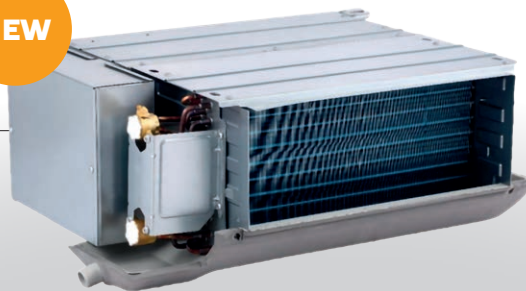
## FCU INDOOR UNITS DUCT UNITS, 2 PIPES

### FEATURES

- Possibility of using external control 2/3-way valve
- Optionally wired controller SWC-62
- Optionally central controller SCM-30
- Support Modbus RTU
- Possibility of using external control of fan speed (low, medium, high) by 230 V via SF2-DTK
- Possibility of using external control of fan speed (low, medium, high) by 0-10V DC via SF2-EC

NEW

SF2-XXXD3



OPTIONAL  
WIRED CONTROLLER  
SWC-61

### TECHNICAL PARAMETERS

MODEL		SF2-200D3	SF2-300D3	SF2-400D3	SF2-500D3
Capacity cooling / heating	kW	2,5 / 2,7	3,4 / 4,0	4,3 / 5,0	4,6 / 5,5
Power supply	phase / Hz / V	1~ / 50 / 220-240	1~ / 50 / 220-240	1~ / 50 / 220-240	1~ / 50 / 220-240
Sound pressure level at 1 m	dB(A)	39 / 33 / 25	37 / 31 / 23	43 / 38 / 30	45 / 39 / 31
External static pressure	nom. / min - max	12 / 0-50	12 / 0-50	12 / 0-50	12 / 0-50
Dimension (w × h × d) / Net weight	mm / kg	632 × 243 × 482 / 14,0	773 × 243 × 482 / 17,2	908 × 243 × 482 / 19,2	908 × 243 × 482 / 19,2

MODEL		SF2-600D3	SF2-700D3	SF2-800D3	SF2-1000D3
Capacity cooling / heating	kW	5,9 / 6,9	6,5 / 7,6	8,0 / 9,4	9,1 / 11,0
Power supply	phase / Hz / V	1~ / 50 / 220-240	1~ / 50 / 220-240	1~ / 50 / 220-240	1~ / 50 / 220-240
Sound pressure level at 1 m	dB(A)	50 / 44 / 34	51 / 45 / 40	50 / 43 / 36	55 / 46 / 34
External static pressure	nom. / min - max	12 / 0-50	12 / 0-50	12 / 0-50	12 / 0-50
Dimension (w × h × d) / Net weight	mm / kg	1003 × 243 × 482 / 21,7	1178 × 243 × 482 / 23,5	1368 × 243 × 482 / 27,7	1368 × 243 × 482 / 27,7

MODEL		SF-1200D3	SF-1400D3		
Capacity cooling / heating	kW	10,1 / 11,8	11,1 / 12,7		
Power supply	phase / Hz / V	1~ / 50 / 220-240	1~ / 50 / 220-240		
Sound pressure level at 1 m	dB(A)	50 / 43 / 34	53 / 50 / 47		
External static pressure	nom. / min - max	12 / 0-50	12 / 0-50		
Dimension (w × h × d) / Net weight	mm / kg	1658 × 243 × 482 / 33,8	1898 × 243 × 482 / 37,0		

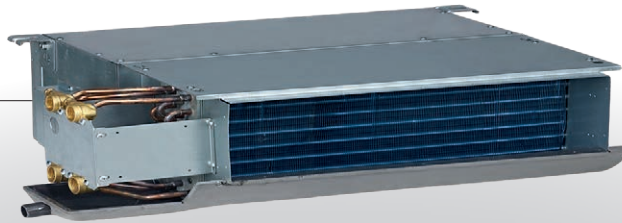
Duct units with 2 pipes doesn't include 3 or 2-way valve in the package.  
The valve uses the characteristics of NC (normally closed) and power supply 230V from fan coil unit. SINCLAIR doesn't offer valves.

# FCU INDOOR UNITS DUCT UNITS, 4 PIPES

## FEATURES

- Independent connection to the heating and cooling circuits
- Possibility of using external control 2/3-way valve
- Optionally wired controller KJR-18B or SWC-86A
- Optionally central controller SCM-30
- Support Modbus RTU via SWC-86A
- Equipped with alarm and ON/OFF contact
- Possibility of using external control of fan speed (low, medium, high) by 230 V

SF-XXXD4



OPTIONAL  
WIRED CONTROLLER  
KJR-18B OR SWC-86A

## TECHNICAL PARAMETERS

MODEL		SF-200D4	SF-300D4	SF-400D4	SF-500D4
Capacity cooling / heating	kW	1,4 / 2,1	2,2 / 3,0	2,5 / 3,7	3,0 / 4,4
Power supply	phase / Hz / V	1~ / 50 / 220-240	1~ / 50 / 220-240	1~ / 50 / 220-240	1~ / 50 / 220-240
Sound pressure level at 1 m	dB(A)	35 / 25 / 23	36 / 29 / 23	38 / 32 / 24	43 / 35 / 27
External static pressure	nom. / min - max	12 / 0-50	12 / 0-50	12 / 0-50	12 / 0-50
Dimension (w × h × d) / Net weight	mm / kg	741 × 241 × 522 / 17,2	841 × 241 × 522 / 19,5	941 × 241 × 522 / 21,5	941 × 241 × 522 / 21,5

MODEL		SF-600D4	SF-800D4	SF-1000D4	SF-1200D4
Capacity cooling / heating	kW	4,2 / 5,7	5,3 / 6,8	6,7 / 8,2	8,2 / 10,1
Power supply	phase / Hz / V	1~ / 50 / 220-240	1~ / 50 / 220-240	1~ / 50 / 220-240	1~ / 50 / 220-240
Sound pressure level at 1 m	dB(A)	46 / 39 / 30	46/38/30	48/41/31	47/40/30
External static pressure	nom. / min - max	12 / 0-50	12 / 0-50	12 / 0-50	12 / 0-50
Dimension (w × h × d) / Net weight	mm / kg	1161 × 241 × 522 / 24,2	1461 × 241 × 522 / 33,5	1566 × 241 × 522 / 35,2	1856 × 241 × 522 / 39,7

Duct units with 4 pipes doesn't include 3 or 2-way valve in the package. The valve uses the characteristics of NC (normally closed) and power supply 230V from fan coil unit. SINCLAIR doesn't offer valves.

## FCU INDOOR UNITS FLOOR-CEILING UNITS, 2 PIPES

### FEATURES

- Horizontal or vertical installation
- Possibility of using external control 2/3-way valve
- Optionally wired controller KJRP-75A or KJR-18B or SWC-86A
- Optionally central controller SCM-30
- Support Modbus RTU
- Equipped with alarm and ON/OFF contact
- Possibility of using external control of fan speed (low, medium, high) by 230 V
- Possibility of using external control of fan speed (low, medium, high) by 0-10V DC

SF-XXXF3



OPTIONAL  
WIRED CONTROLLER  
KJRP-75A OR KJR-18B OR SWC-86A

### TECHNICAL PARAMETERS

MODEL		SF-250F3	SF-350F3	SF-500F3	SF-700F3
Capacity cooling / heating	kW	2,4 / 2,6	3,5 / 3,5	4,3 / 4,7	5,6 / 6,0
Power supply	phase / Hz / V	1~ / 50 / 220-240	1~ / 50 / 220-240	1~ / 50 / 220-240	1~ / 50 / 220-240
Sound pressure level at 1 m	dB(A)	29 / 24 / 18	38 / 32 / 23	46 / 38 / 30	50 / 42 / 31
Dimension (w × h × d) / Net weight	mm / kg	1020 × 495 × 200 / 21,5	1240 × 495 × 200 / 25,5	1240 × 495 × 200 / 25,5	1360 × 495 × 200 / 28,5

MODEL		SF-800F3			
Capacity cooling / heating	kW	7,4 / 8,1			
Power supply	phase / Hz / V	1~ / 50 / 220-240			
Sound pressure level at 1 m	dB(A)	51 / 44 / 33			
Dimension (w × h × d) / Net weight	mm / kg	1360 × 591 × 200 / 32,5			

Floor-ceiling units with 2 pipes doesn't include 3 or 2-way valve in the package. The valve uses the characteristics of NC (normally closed) and power supply 230V from fan coil unit. SINCLAIR doesn't offer valves.



## NOTES AND EXPLANATIONS

Shortcuts used in tabs:

- ID/OD - indoor unit / outdoor unit
- A,W,C - average, warm, cold climate

Devices contain fluorinated greenhouse gases covered by the Kyoto Protocol.

GWP of used refrigerants:

- R410a (50 % HFC-32, 50 % HFC-125) = 2088
- R32 (100 % HFC-32) = 675

Air conditioners data are based on following conditions:

Length of connection pipe: 5m. Cooling: indoor temperature 27 °C DB/19 °C WB, outdoor temperature 35 °C DB/24 °C WB. Heating condition: indoor temperature 20 °C DB/15 °C WB, outdoor temperature 7 °C DB/6 °C WB. SEER/SCOP was calculated according to European standards contained in EN14825, based on part load classifying and testing conditions given by norm EN14511.

Fan coil units data are based on following conditions:

Cooling mode: entering air temperature 27 °C DB/19 °C WB, entering/leaving water temperature 7 °C /12 °C, Heating mode: entering air temperature 20 °C DB, entering/leaving water temperature 45/40 °C



see you  
in Sinclair world...

This catalogue is informative only and does not constitute a binding offer from the side of SINCLAIR CORPORATION LTD.

Company accepts no responsibility for any loss or damage arising from variations in the description in its catalogues or other documents.

The noise levels mentioned in this catalogue are values measured under ideal conditions, in an anechoic chamber. These values can be influenced by local conditions (acoustical bouncing area, the equipment of the room, etc.).

The pictures of units and accessories are illustrative only.

The specification of products is subject to change based on further development of the units by the producer and can be changed without prior notice.

The content of this catalogue is protected by copyright of SINCLAIR CORPORATION LTD.

The reproduction of information or data, in particular the use of texts, text excerpts or images, requires the prior written approval of the Company.



