

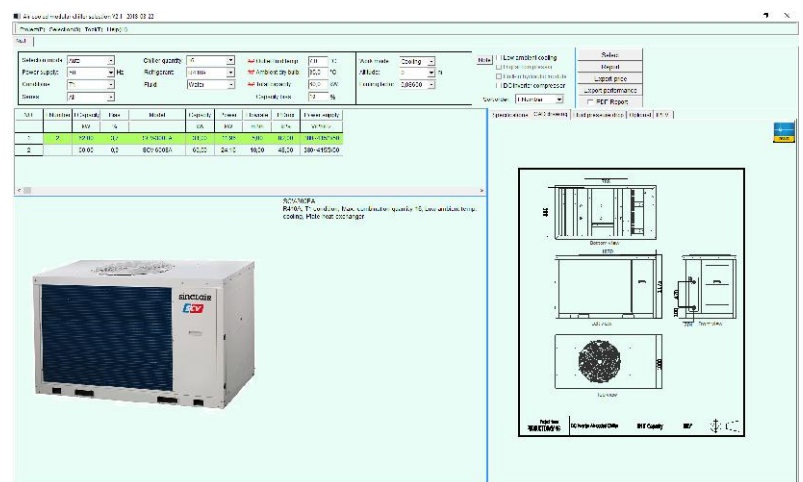


4/2018

Sinclair Newsletter

SELECTION SOFTWARE V2.1 FOR AIR-COOLED FULL DC INVERTER CHILLERS

To get a proper design we provide Selection software for air-cooled full DC inverter modular chillers. Based on the input data (water outlet temperature, ambient temperature, total cooling or heating capacity, concentration of anti-freeze liquid, etc.) the software automatically chooses appropriate combination of modular chillers.



For output you can use a detailed solution performance, CAD drawing (DWG file), EER, COP and also Integrated Part Load Value which means unit performance based on load capacity 25, 50, 75, 100%.

This may be exported to Microsoft Word file.