

USER'S MANUAL

WIFI KIT

SWM-03



To Users

Thank you for selecting Sinclair's product. Please read this instruction manual carefully before installing and using the product, so as to master and correctly use the product. In order to guide you to correctly install and use our product and achieve expected operating effect, we hereby instruct as below:

- (1) This appliance is not intended for use by persons (including children) with reduced physical, sensory or mental capabilities, or lack of experience and knowledge, unless they have been given supervision or instruction concerning use of the appliance by a person responsible for their safety. Children should be supervised to ensure that they do not play with the appliance.
- (2) This instruction manual is a universal manual, some functions are only applicable to particular product. All the illustrations and information in the instruction manual are only for reference, and control interface should be subject to actual operation.
- (3) In order to make the product better, we will continuously conduct improvement and innovation. We have the right to make necessary revision to the product from time to time due to the reason of sales or production, and reserve the right to revise the contents without further notice.
- (4) For personal injury or property loss and damage caused by improper

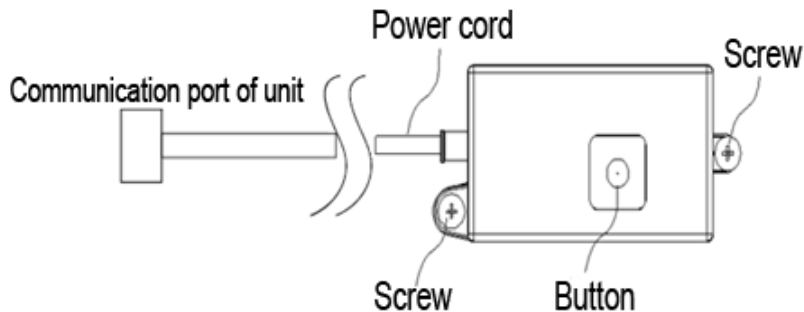
operation such as improper installation and debugging, unnecessary maintenance, violation of related national laws and rules and industrial standard, and violation of this instruction manual, etc., we will bear no liability.

- (5) The final right to interpret for this instruction manual belongs to SINCLAIR CORPORATION Ltd.

Contents

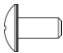


1 SKETCH MAP	1
2 ACCESSORIES LIST	2
3 INSTALLATION	2
4 APP DOWNLOAD	5

1 Sketch Map



G-Cloud, operated with smart terminal, EWPE App and wireless router, can achieve long-distance monitoring, schedule management, scene management, temperature setting and other functions for Sinclair air conditioners.

2 Accessories List

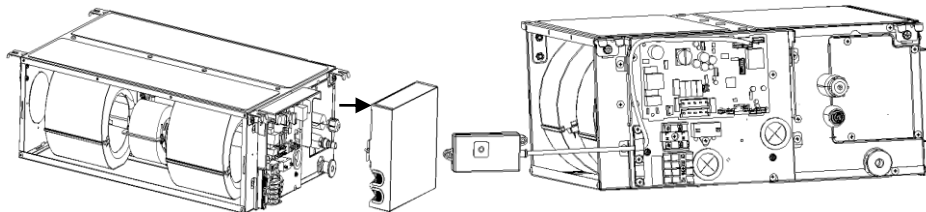
Name	Photo	Q'ty	Unit	Purpose
Tapping screw		2	pieces	Fixing G-Cloud
3M tape		2	pieces	3M tape assembly
200m High-temperature tieline 200m		3	pieces	Fixing the wires

3 Installation

Note:

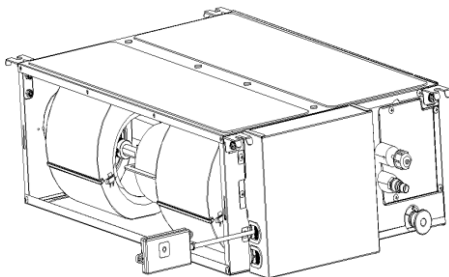
- ① The controller can be connected with any indoor unit for installation;
- ② Please install it in the indoor site with the strongest signal, closing to the router as much as possible.

Installation procedures:

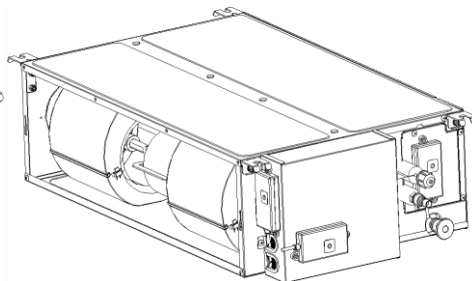


1. Open the electric box of indoor unit;

2. Lead the communication port of G-Cloud from the wire outlet of electric box, and then connect the communication port of G-Cloud unit to the corresponding communication port on the main board of indoor unit;



3. Once connection is succeeded, close the electric box;



4. Adjust the G-Cloud to the proper position and then fix the main unit of G-Cloud to a certain position (user can select 3M tape or screws to fix it).

1) Notices for connecting wire

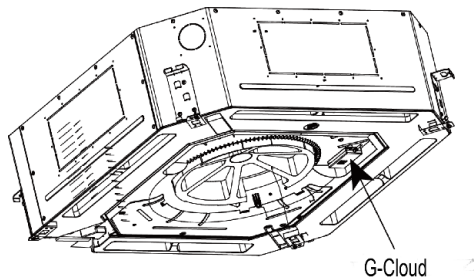
Please cut off the power of indoor unit before installation. No power supply during the while installation process;

2) Installation instruction

◆ As for assembly, please face the panel with reset button of G-Cloud to the operator. Then operator can operate it conveniently.

◆ Prohibit installing G-Cloud at damp place.

◆ The installation position of G-Cloud is different for different model. Please install it according to user' s requirement and the actual installation position of unit. (the installation position of G-Cloud in above figure is only for reference):



4 App Download

Scan the following QR code to download “EWPE” App



Note:

Supported system version: iOS7.0 system or higher version and Android 4.4 system or higher version.

Configuration Method:

- 1) For initial configuration, G-Cloud is under hotspot status after energization. Mobile phone can detect the hotspot of G-Cloud. Under this circumstances, configuration can be conducted manually. As for details, please operate it according to the instruction of manual configuration page of EWPE App.



- If the operator wants to conduct the configuration by one button, please reset the G-Cloud first. Two reset methods of G-Cloud: (1) Under on status, press “FUNCTION” button on display board to switch to WIFI function. Icon of WIFI flashes to enter into WIFI setting. The original temperature display place “888” displays current WIFI status. Press “UP” or “DOWN” button to select the setting content. Select “**RES**” and press “SWING/ENTER” button to save it, and then G-Cloud reset is finished.
- 2) Or hold G-Cloud button for 8s to reset it. Once reset is succeeded, conduct the configuration by one button. As for details, please operate it according to the instruction of one-button configuration page of EWPE App.

Note:

When changing router, name of route or password of router, it needs to conduct configuration again.

NOTE CONCERNING PROTECTION OF ENVIRONMENT



This product must not be disposed of via normal household waste after its service life, but must be taken to a collection station for the recycling of electrical and electronic devices. The symbol on the product, the operating instructions or the packaging indicate such disposal procedures. The materials are recyclable in accordance with their respective symbols. By means of re-use, material recycling or any other form of recycling old appliances you are making an important contribution to the protection of our environment. Please ask your local council where your nearest disposal station is located.

In case of quality problem or other please contact your local supplier or authorized service center.

Emergency number: 112

PRODUCER

SINCLAIR CORPORATION Ltd.
1-4 Argyll St.
London W1F 7LD
Great Britain

www.sinclair-world.com

This product was manufactured in China (Made in China).

REPRESENTATIVE

SINCLAIR EUROPE spol. s r.o.
Purkynova 45
612 00 Brno
Czech Republic

TECHNICAL SUPPORT

SINCLAIR Global Group s.r.o.
Purkynova 45
612 00 Brno
Czech Republic

Tel.: +420 800 100 285
Fax: +420 541 590 124

www.sinclair-solutions.com
info@sinclair-solutions.com

